

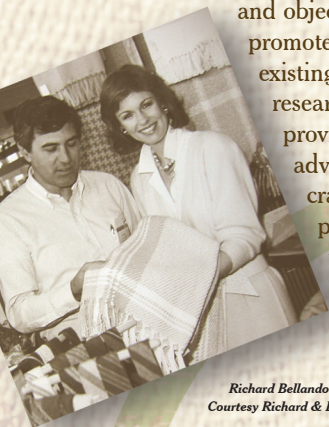
Kentucky Craft History and Education Association

The Kentucky Craft History and Education Association gathers, conserves, and presents the history and ongoing impact of crafts in Kentucky.

The state of Kentucky boasts a rich craft heritage, nurtures an active community of contemporary craft entrepreneurs, and is known for institutions that have historically and continually fostered Kentucky's craft culture. These institutions have produced craft leaders and model programs—many that came to fruition in the postindustrial era. Crafts are a unique part of the state's cultural identity, are interwoven throughout its rural and agrarian lifestyles, integrated into the development of creative communities, and are a significant contributor to its current economy and tourism industry.

The Kentucky Craft History and Education Association is taking the lead in documenting this proud craft history. KCHEA is not a bricks and mortar establishment but collaborates with other institutions to create public awareness about the place of crafts in Kentucky's education, culture, economy, and history.

KCHEA identifies the people, documents, and objects of Kentucky craft history and promotes the acquisition of crafts by existing state repositories. It encourages research, makes resources available, provides technical assistance, and advocates for the preservation of craft history. KCHEA engages in partnerships with other organizations in crafts, arts, education, and humanities to present Kentucky's craft history to diverse populations.



Richard Bellando and Phyllis George, Courtesy Richard & Lila Bellando

KCHEA works to expand access to craft collections and resources through digitized formats and technology.

KCHEA'S History

- informally began in January of 2008, at a meeting in Berea, Kentucky.
- incorporated as a 501 C-3 May, 2008.
- was established by founding members Susan Goldstein; founding president, Philis Alvic, Lila Bellando, Richard Bellando, Tim Glotzbach, Fran Redmon, and Mary Reed.



Kentucky New Era Newspaper Article, courtesy Lysbeth Wallace Estate

Courtesy Modern Mountain Magazine

Courtesy Berea College Archives

- continues to add to the collection of over 90 video interviews, with transcripts, of craftspeople, arts administrators, art educators, and craft enthusiasts who have been instrumental in Kentucky's craft history. These interviews are available at the

Kentucky History Center and can be seen online through Pass the Word.

- hosted a forum entitled Kentucky Craft History: Gather, Conserve, Present, November 2009 to gather community input.
- produced and traveled Kentucky Crafted Luminaries: Sharing the Stories exhibition to locations around state along with an educational curriculum guide. Continues to add to and look for new venues.
- hosted Craft History: Preserving Your Personal Legacy workshops.



Sarah Frederick, Fran Redmon Collection

On the front and back covers:
Background Textile, Fireside Industries Coverlet, Philis Alvic Collection
Maple Bowl by Jack Fifield (left to right)
Basket makers, Courtesy Berea College Archives
Homer Ledford, Courtesy Colista Ledford
Connie Carlton, Courtesy Kentucky Artisan Center at Berea
Woman spinning, Courtesy Berea College Archives
Eleanor Churchill, Courtesy Richard and Lila Bellando
Inside panel background: Weaving, courtesy Lysbeth Wallace Estate

KCHEA's Values

There is an inherent value in the making of craft which embodies both skill and design; many skills are intrinsic in rural culture and have historically been part of essential living.



Courtesy Marianne Brown

Kentucky has a long and rich craft heritage

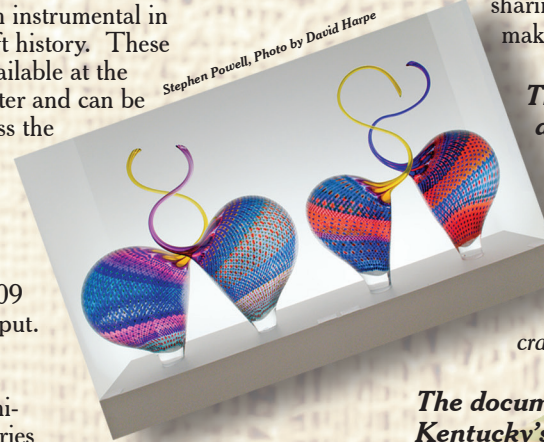
involving both the makers and organizations of craft that have created an economic and cultural impact resulting in national and international recognition for the state as a model for craft development.

History provides valuable lessons that impact our future

and documenting and sharing Kentucky's craft history honors the makers and creates pride in our heritage.

The arts offer many educational and economic benefits and support the development of intellectual skills.

Crafts can play a role in education through a variety of academic disciplines connecting students to craft artists as role models and educating them to craft as a vocational and lifestyle choice.



Stephen Powell, Photo by David Harpe

The documentation and preservation of Kentucky's craft history is needed and urgent

and is best done through the artifacts, documents, and stories told by craft makers and organizational leaders that have most significantly impacted the state's craft movement.

Partnerships are important

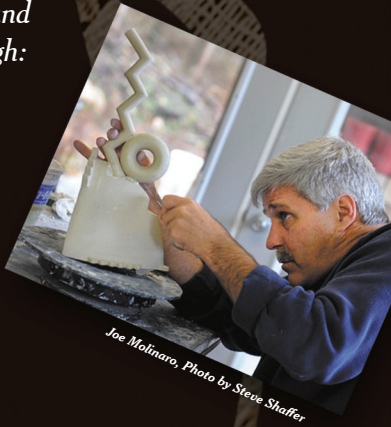
and have been vital to Kentucky's craft success and are critical to the ongoing preservation and documentation of its history



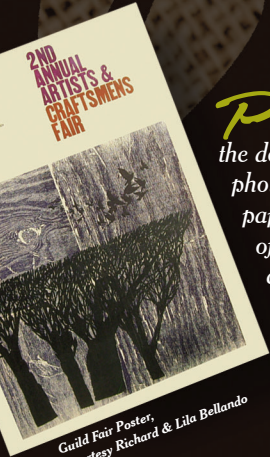
Courtesy Walter Hyleck

Our Kentucky Craft History is documented and preserved through:

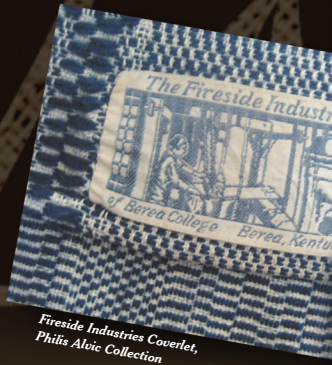
People
the individual stories of artists, leaders, and significant appreciators



Paper
the documents, publications, photographs, and written papers that record the details of events, institutions, and craft artists



Objects
the crafts, tools, and materials that illuminate the traditional and creative processes



If you would like to participate in educational offerings, support our mission, or request more information,

Contact:
Kentucky Craft History and Education Association
P.O. Box 22363
Lexington, KY 40522
info@kchea.org
kchea.org

Kentucky Craft History
and Education Association

Kentucky Craft History
and Education Association