

Craft History: Preserving Your Personal Legacy

PHILIS ALVIC

KMHA Professional Development & Networking Conference

June 2016

Hopkinsville, Kentucky



KENTUCKY CRAFT HISTORY
& EDUCATION ASSOCIATION

Founded in 2008

The Kentucky Craft History and Education Association gathers, conserves and presents the history and on-going impact of crafts in Kentucky.

History – built on information



Person part of Universal



What tells the story



Documents



Objects

Recordings

Linda Fifield - Craft Artisan

Linda was raised in rural Kentucky with her extended family engaged in functional crafts. She began her exploration of beading after being inspired by an exhibition at Chicago's Field Museum. Linda has developed a unique method of beading. In these excerpts she talks about influences of place and family in the development of her career, her beading techniques, and design influences. She discusses the benefits she has derived from participation with many different craft programs in Kentucky and the region.

Linda Fifield - Growing Up in Knot County



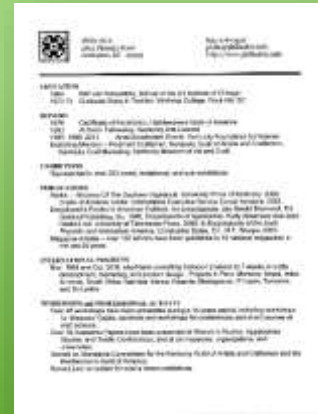
Linda talks about her birthplace and the influences of family on the work she now produces.

Mary Reed



What to save

You should save letters, catalogs, photographs, invitations, diaries and other personal writings, sales records and other related financial transactions, texts of speeches, press clippings, and anything else that will help others understand the historical and social texture of your creative life.



Archives

Near to home



Because the research value of records may be diminished if items are removed or if the records are rearranged, you should contact the repository staff before weeding, discarding, or reorganizing papers and records, regardless of their location or format.



DEED OF GIFT

Kentucky Historical Society, 180 W. Broadway Frankfort, KY
40601

Name: _____	Date: _____
Address: _____	
City: _____	State: _____ Zip: _____
Phone/Fax: _____	Fax: _____

I do convey to the Kentucky Historical Society the item(s) described below as an unrestricted gift, unless otherwise noted, and transfer to the Kentucky Historical Society legal title, copyright, and literary property rights to the item(s) described as I should them.

Description of Gift: _____

By my signature below I accept the foregoing conditions and acknowledge reading any attached information.

This gift is given in memory of: _____

Donor: _____ Donor's agent: _____
 (Donor's agent)

Date received: _____ Received by: _____

THE GIFT DESCRIBED ABOVE IS ACCEPTED FOR KENTUCKY HISTORICAL SOCIETY

By: _____ Date: _____

Accession#

DEED OF GIFT

Transfer of Ownership
 Access to the Collection
 Transfer of Intellectual Property Rights

Objects – private hands



Objects Collections



Oral History Community Scholars



KHCEA Interviews

PASS THE WORD

A PROJECT OF THE KENTUCKY ORAL HISTORY COMMISSION



Craft Luminary Project

The purpose of the Craft Luminary Project is to document and preserve through video history interviews the personal stories of individuals who have made significant contributions to Kentucky's craft movement and impacted Kentucky craft history. KHCEA continued and expanded the interview project developed by the [Kentucky Guild of Artists and Craftsmen's \(KGAC\)](#) oral history committee. The KGAC interviews became the basis for KHCEA's efforts and interviews are continuously being added to the over 40 that were initially conducted.

In FY 2010, work on the Craft Luminary Project included development of guidelines and an application form and the establishment of a committee that reviews oral history recommendations for the board. In follow up to a 2009 [Oral History Commission](#) Grant, transcriptions of the interviews were completed and edited in the past year that will be maintained at the [Kentucky History Center](#).

KHCEA added four video histories in FY 2010 which were conducted with several Eastern Kentucky folk artists: Minnie Adams, Tim Lewis, Ronald Cooper and Calvin Cooper. Assistance for the interviews was provided by the [Kentucky Folk Art Center](#), Morehead, Kentucky. Although open to suggestions of persons to interview, at this time funding and health of the individual determine priorities.*

In 2011 KHCEA received a \$3,000 matching grant from [LexArts](#) to support video oral histories of Kentucky instrument makers. The project focused on 17 individuals who have been influential in the crafting of stringed instruments and who are a special part of Kentucky's heritage. During the personal on-site studio interviews, luthiers discussed how they learned the trade and explained the artistry of building a string instrument. In addition to the makers' individual stories, the use of video will also document the processes of creating and playing the instruments. [More info here.](#)

In 2013, KHCEA directly funded and completed interviews with its own founding board president, Susan Goldstein and board member Nancy Atchar. Additional Kentucky artists interviews were conducted with two Louisville fiber artists, Mary-Stuart Reichard and Anne Barnes Bird. Also, the outgoing director of David Appalachian Crafts, Ruth Ann Iwanski, woodworker, Terry Ratiff of Martin, and Ed Brinkman, an original Kentucky Guild of Artists and Craftsmen member involved with the Guild Train project were interviewed.



Clips on YouTube



KCHEAORG



This channel is presented by the KENTUCKY CRAFT HISTORY & EDUCATION ASSOCIATION whose mission is to conserve and present the history and ... [Show more](#)

Uploads



Walter Cornelison Generations at Bybee

9 views · 4 months ago



Richard Bellando We Need Craft to Help us Maintain Our

8 views · 4 months ago



Richard Bellando Crafts Have Dignity

6 views · 4 months ago



Richard and Lila Bellando Churchill Weavers

32 views · 4 months ago



Minnie Adkins I've Done It All My Life

10 views · 4 months ago

Record your own

The image is a screenshot of the StoryCorps website. At the top, there is a navigation bar with the logo "StoryCorps.me" and links for "Home", "Browse", and "More". On the right side of the navigation bar are "Log In" and "Sign Up" buttons. The main content area has an orange background. On the left, the text "Record and share the stories that are all around you." is displayed in white. Below this text are two buttons: "Available on the App Store" and "Get it on Google Play". On the right, a white smartphone is shown displaying the app's recording interface. The phone screen shows a red "Recording" status bar at the top, a central logo featuring a fork, a speech bubble with quotation marks, and a knife, and the hashtag "#THEGREATLISTEN" below it. The phone's status bar at the top shows "8:41 AM" and "100%" battery. At the bottom of the website, there is a dark orange banner with the text "Help StoryCorps archive the wisdom of generations." and a "Donate Now" button.

StoryCorps.me Home Browse More Log In Sign Up

Record and share the stories that are all around you.

Available on the App Store Get it on Google Play

Recording

#THEGREATLISTEN

8:41 AM 100%

07:28

Help StoryCorps archive the wisdom of generations. Donate Now

Plan for the future

The screenshot shows the GYST website dashboard. At the top, there is a navigation bar with the GYST logo, and links for CHECKLISTS, GUIDES, RESOURCES, LOGIN, and a SIGN UP button. Below the navigation bar is a blue header with the text 'HELLO, GYSTER' and a background image of birds flying in a blue sky. The main content area is divided into two columns. The left column contains a sidebar with four checklist categories, each with a progress indicator (0%) and a right-pointing arrow: 'YOUR WILL' (7 tasks remaining), 'YOUR LIVING WILL' (6 tasks remaining), 'LIFE & DISABILITY INSURANCE' (3 tasks remaining), and 'JOIN THE COMMUNITY' (3 tasks remaining). The right column features a section titled 'YOUR WILL' with a welcome message: 'Welcome to the GYST checklist, take a quick tour by clicking on any task. Customize your lists and save progress by taking a quick survey and sign up. You've got this!'. Below this message is a list of five tasks, each with a blue checkmark icon, a task title, and a right-pointing arrow: 1. Learn About Wills, 2. Compare Digital Wills Services, 3. Find an Estate Attorney, 4. Have a Legal Question?, and 5. Store and Share Your Will. A blue circular chat icon is visible in the bottom right corner of the dashboard.

GYST CHECKLISTS ▾ GUIDES ▾ RESOURCES ▾ LOGIN SIGN UP

HELLO, GYSTER

0% **YOUR WILL** ▾
Not started
7 tasks remaining

0% **YOUR LIVING WILL** ▶
Not started
6 tasks remaining

0% **LIFE & DISABILITY INSURANCE** ▶
Not started
3 tasks remaining

0% **EMERGENCY PLANNING** ▶
Not started
3 tasks remaining

0% **JOIN THE COMMUNITY** ▶
Not started
3 tasks remaining

YOUR WILL
Welcome to the GYST checklist, take a quick tour by clicking on any task. Customize your lists and save progress by taking a quick [survey](#) and sign up. You've got this!

- 1 Learn About Wills ▶
- 2 Compare Digital Wills Services ▶
- 3 Find an Estate Attorney ▶
- 4 Have a Legal Question? ▶
- 5 Store and Share Your Will ▶

Pilot Project





KENTUCKY CRAFT HISTORY & EDUCATION ASSOCIATION

Craft History: Preserving Your Personal Legacy

The following represents all the materials and handouts that were distributed as part of the workshop hosted on March 8, 2015 at Kentucky Crafted: The Market, in Lexington, Kentucky.

- [Workshop Agenda](#)
- [Speaker Bios](#)
- [Kentucky Craft Encyclopedia Info Sheet](#)
- [Video Clip Presentation Descriptions](#)
- [List of KCHEA's Completed Oral Histories](#)
- [Conducting an Oral History](#)
- [KHS Deed of Gift Form - Sample](#)
- [Donating to KHS FAQs](#)
- [Kentucky Archive Survey](#)
- [Resources](#)
- [KCHEA Overview SlideShow](#) by Fran Redmon PDF (1.55 MB)
- [Churchill Weavers Collection SlideShow](#) by Jennifer Spence PDF (1.48 MB)
- [Churchill Weavers Collection Brochure](#)
- [Archiving Your History Slideshow](#) by Phillis Alvic PDF (1.6 MB)
- [KCHEA Brochure & Donor Card](#)

[Home](#)

[About KCHEA](#)

[Craft Luminary Exhibit](#)

[Programs](#)

[Craft Luminary Videos](#)

[Events](#)

[News & Reports](#)

[Resources](#)

[Craft Luminary Oral Histories](#)

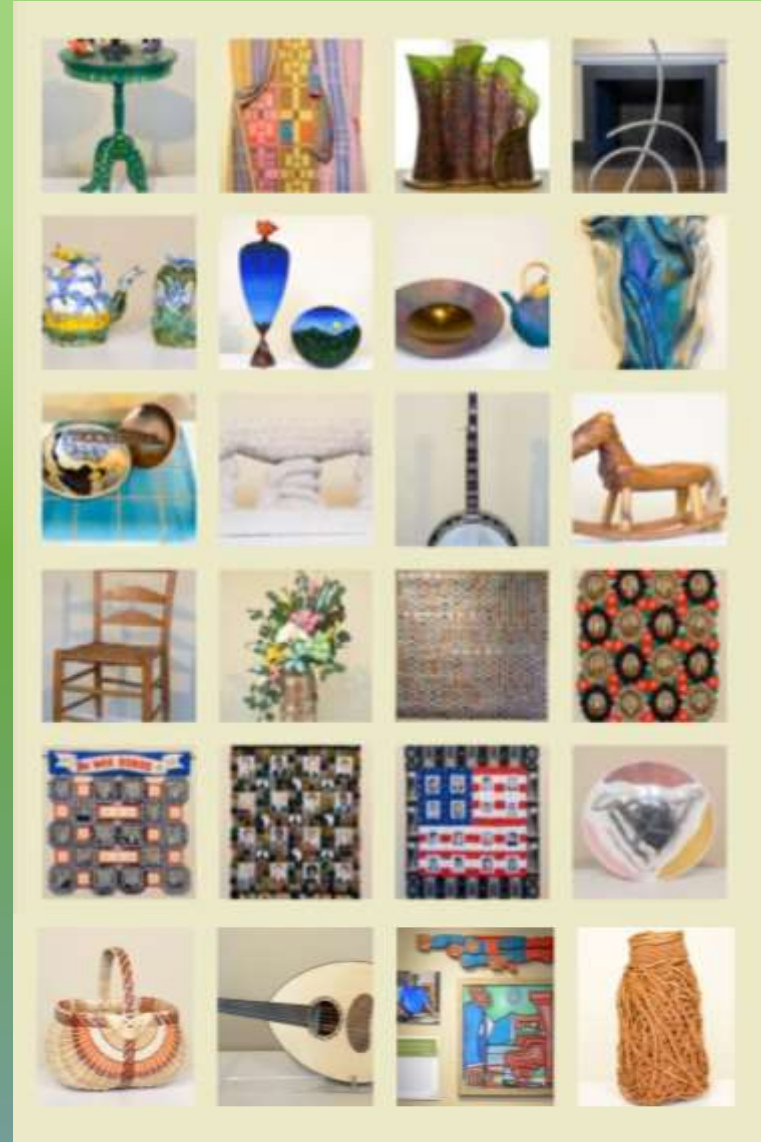
[Craft History: Preserving Your Personal Legacy](#)

[Craft Information](#)

[Find Crafts](#)

[Craft Member Organizations](#)

Craft Luminary Exhibit



Host a Legacy Workshop

